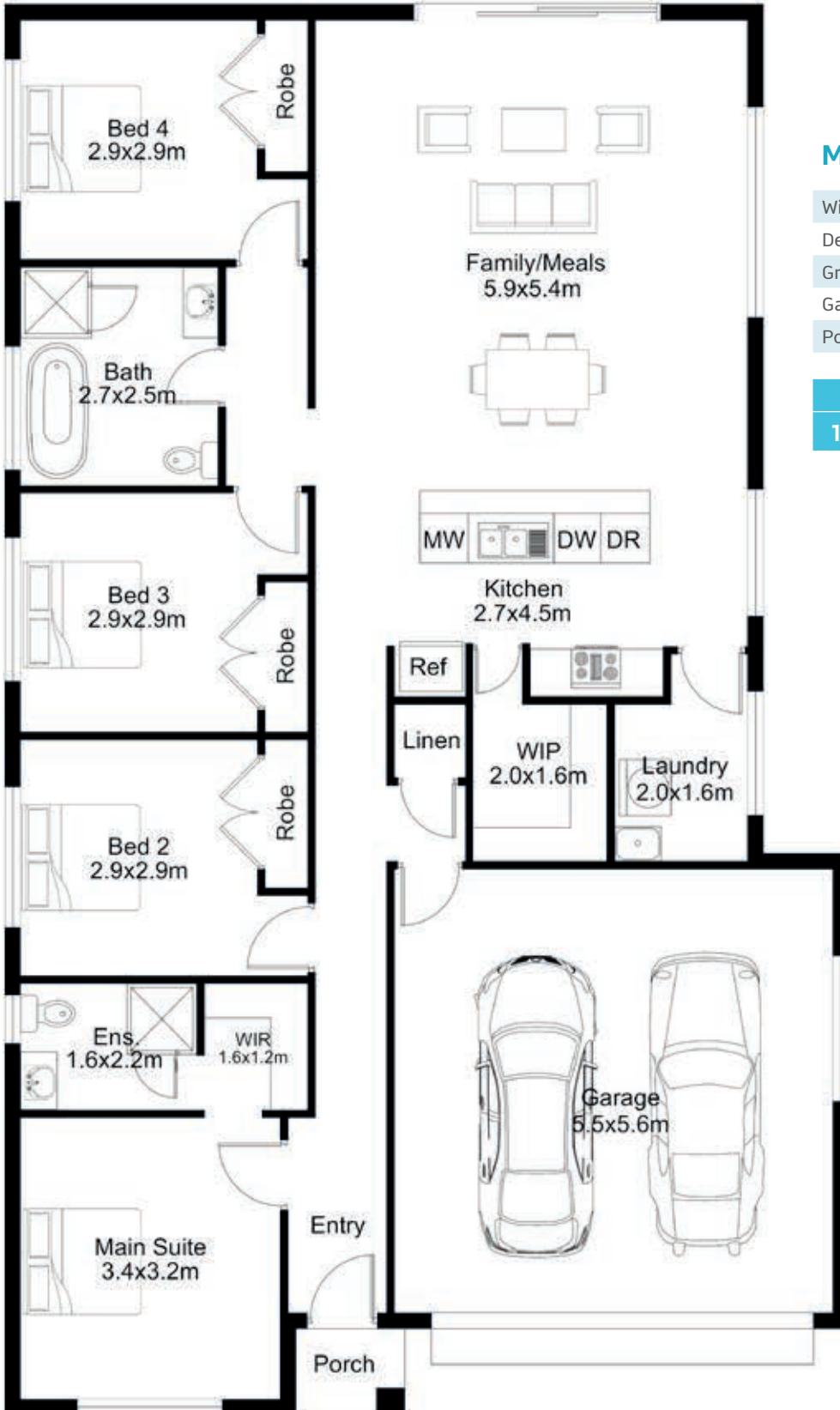


BEDS	BATHS	CARSPACES
4	2	2



MK I

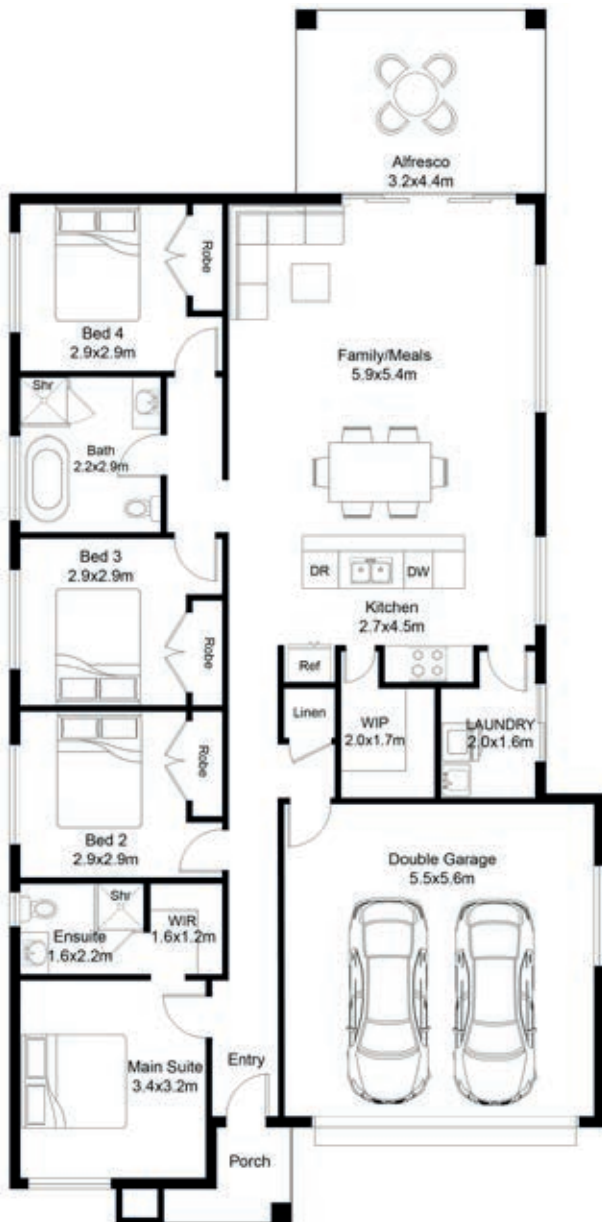
Width	10.67m
Depth	17.75m
Ground floor	136.96m ²
Garage	33.38m ²
Porch	1.46m ²

HOUSE

171.80m ²	18.5sq
----------------------	--------

Disclaimer: All photographs, facades, colour schemes, floor plans and dimensions are for illustrative purposes only and may vary slightly to the end product.

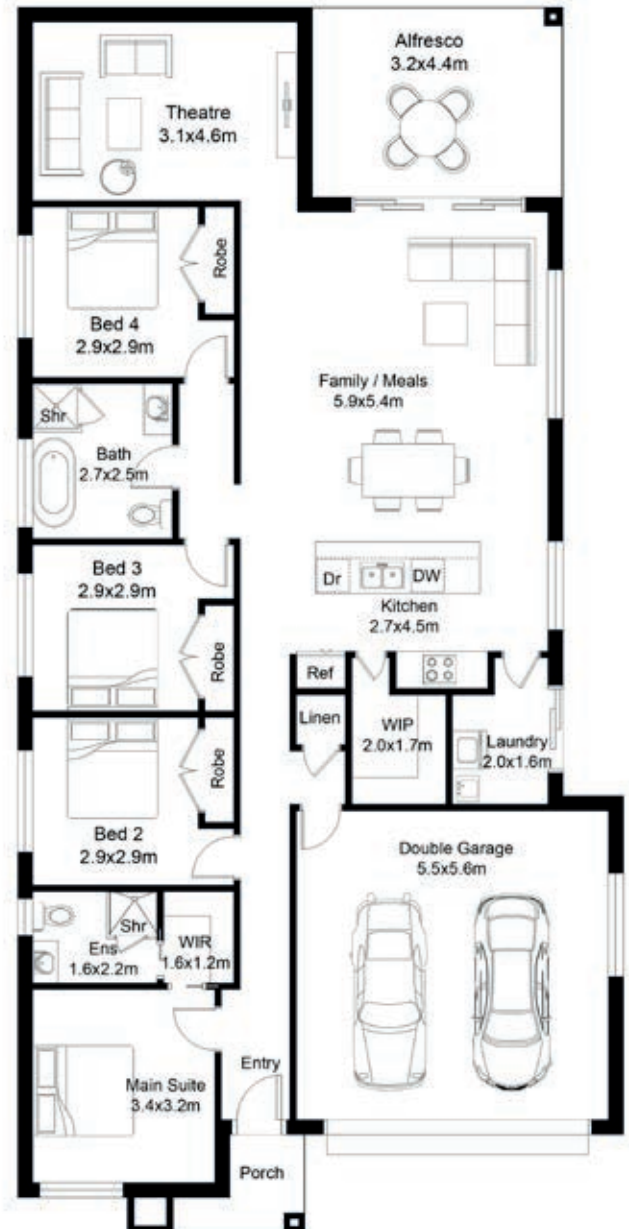
BEDS	BATHS	CARSPACES
4	2	2



MK II

Width	10.67m
Depth	20.99m
Ground floor	136.96m ²
Garage	33.38m ²
Porch	2.82m ²
Alfresco	14.39m ²

HOUSE	
187.55m ²	20sq



MK III

Width	10.67m
Depth	20.99m
Ground floor	153.65m ²
Garage	33.38m ²
Porch	2.82m ²
Alfresco	14.39m ²

HOUSE	
204.24m ²	22sq

Disclaimer: All photographs, facades, colour schemes, floor plans and dimensions are for illustrative purposes only and may vary slightly to the end product.