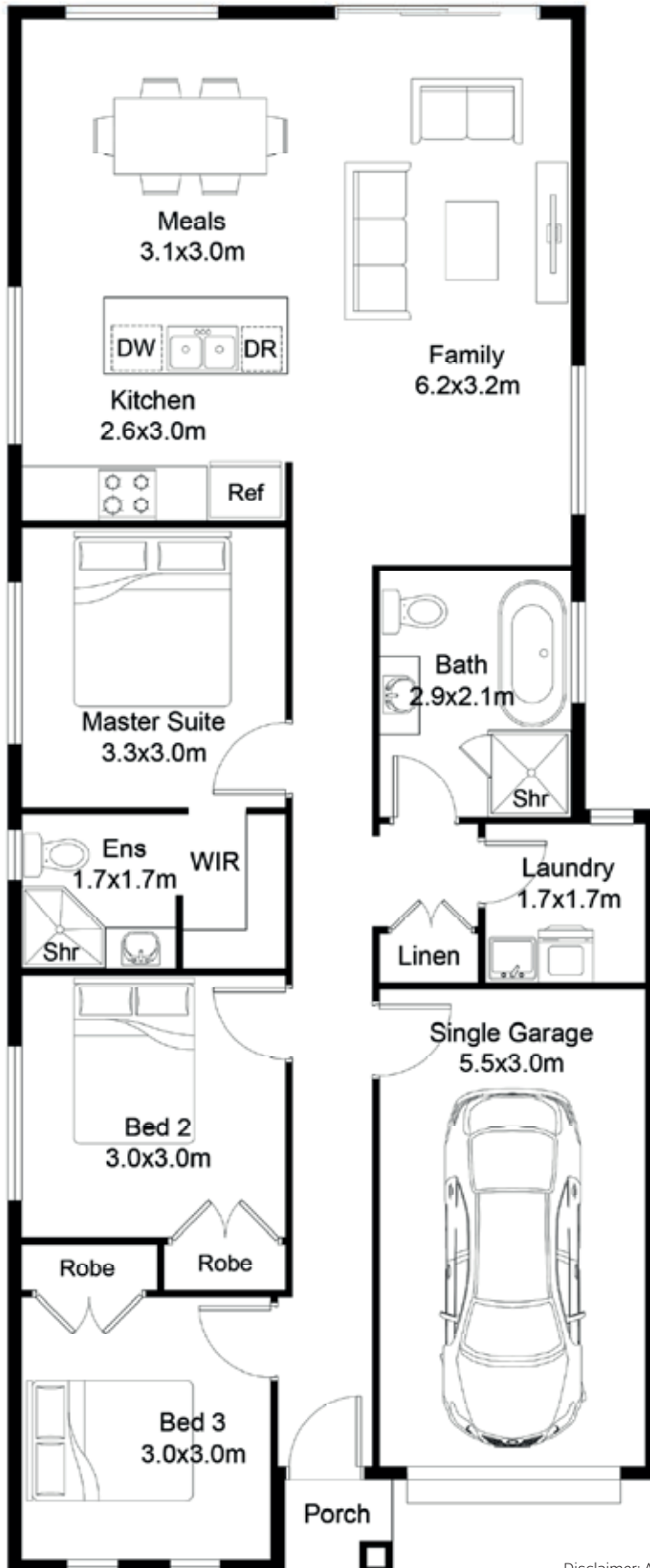


BEDS	BATHS	CARSPACES
3	2	1



## MK I

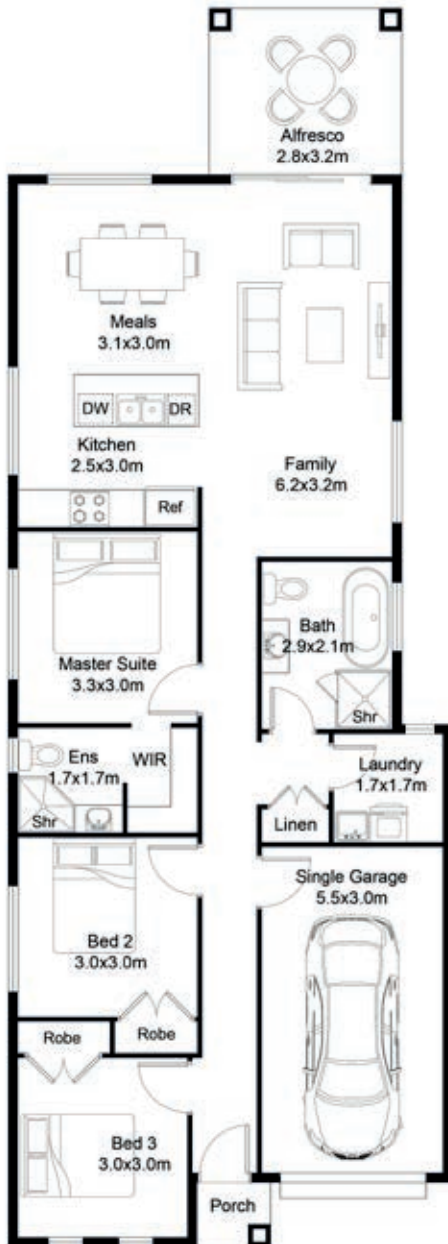
Width	7.55m
Depth	18.12m
Ground floor	105.77m <sup>2</sup>
Garage	18.60m <sup>2</sup>
Porch	1.33m <sup>2</sup>

## HOUSE

125.70m <sup>2</sup>	13.5sq
----------------------	--------

Disclaimer: All photographs, facades, colour schemes, floor plans and dimensions are for illustrative purposes only and may vary slightly to the end product.

BEDS	BATHS	CARSPACES
3	2	1

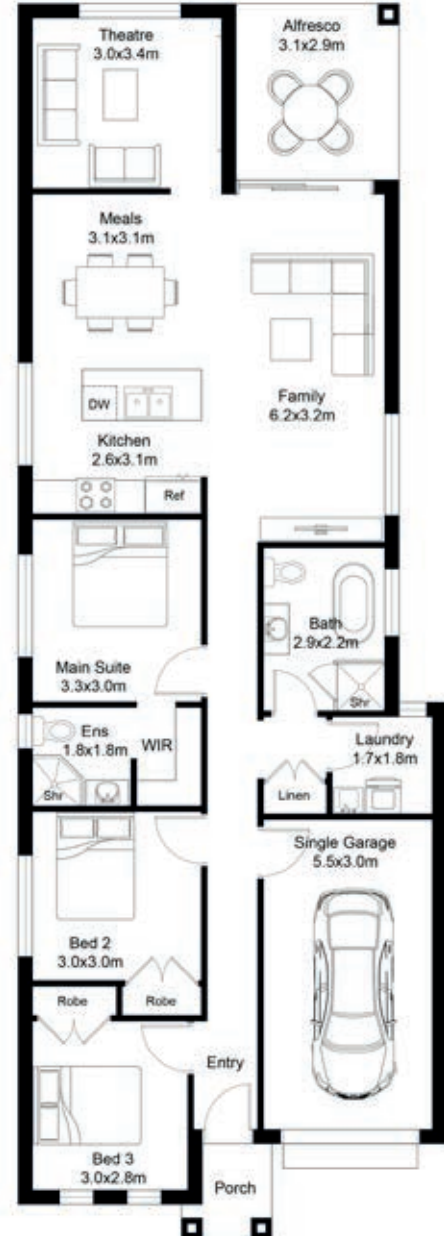


### MK II

Width	7.55m
Depth	20.88m
Ground floor	105.77m <sup>2</sup>
Garage	18.60m <sup>2</sup>
Porch	1.33m <sup>2</sup>
Alfresco	8.94m <sup>2</sup>

HOUSE

**134.64m<sup>2</sup> 14.5sq**



### MK III

Width	7.55m
Depth	21.09m
Ground floor	116.96m <sup>2</sup>
Garage	18.60m <sup>2</sup>
Porch	2.47m <sup>2</sup>
Alfresco	8.99m <sup>2</sup>

HOUSE

**147.02m<sup>2</sup> 16sq**

Disclaimer: All photographs, facades, colour schemes, floor plans and dimensions are for illustrative purposes only and may vary slightly to the end product.