



DOUBLE STOREY | Pictured with the Costal Facade




4 **2.5** **1**

202.74m²

21.7sq

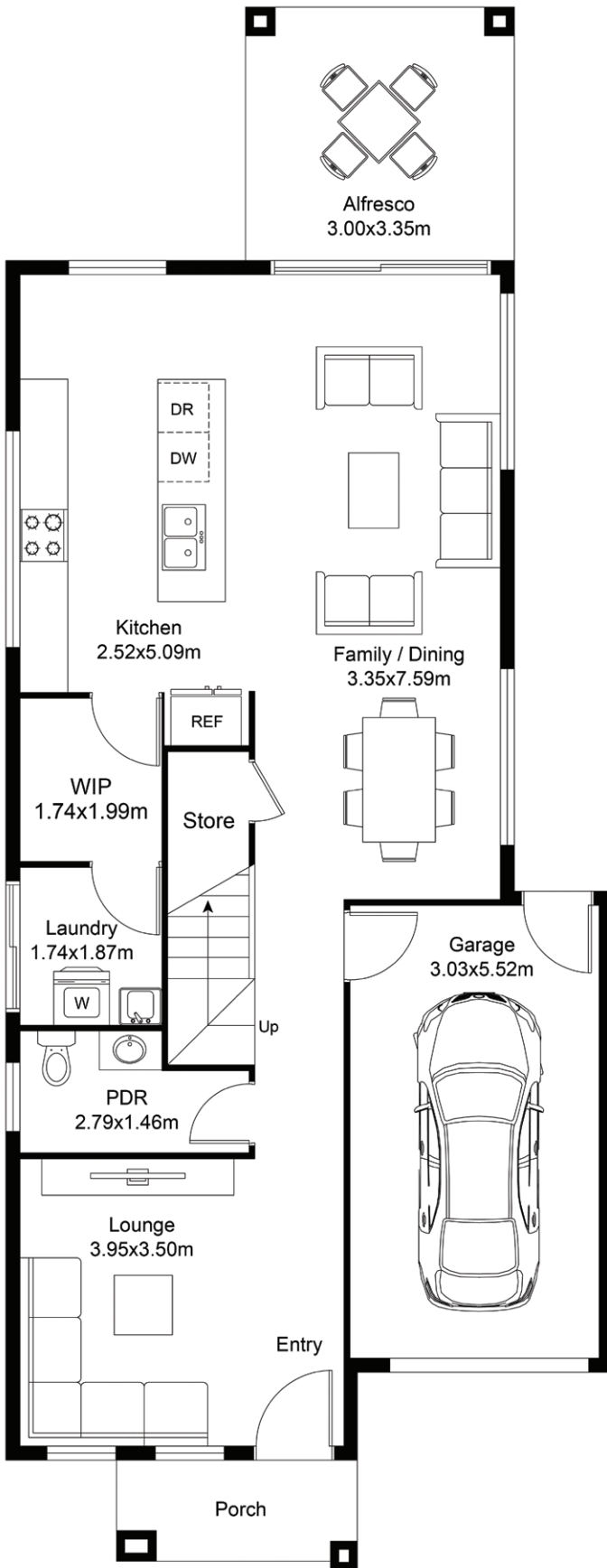
Suits 9.5m frontage

L = 17.75m

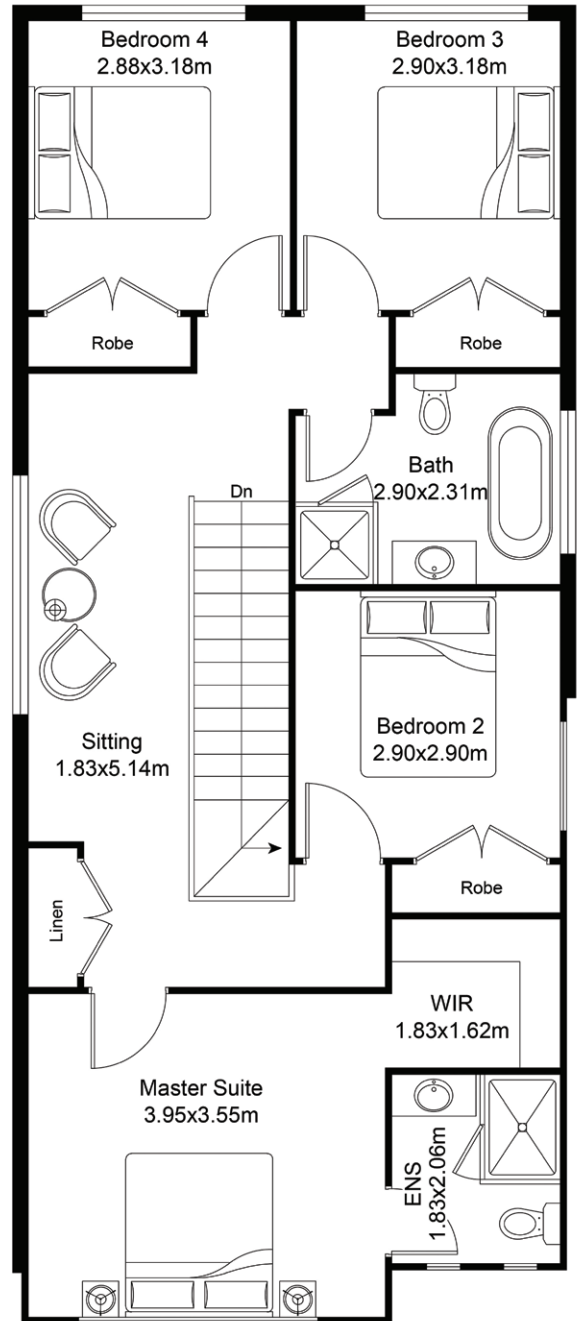
W = 7.55m

	m ²
Ground Floor	79.69
First Floor	90.43
Alfresco	10.05
Garage	19.09
Porch	3.48

Disclaimer: All photographs, facades, colour schemes, floor plans and dimensions are for illustrative purposes only and may vary slightly to the end product.



Ground Floor



First Floor

Disclaimer: All photographs, facades, colour schemes, floor plans and dimensions are for illustrative purposes only and may vary slightly to the end product.