



DOUBLE STOREY | Pictured with the Contemporary Facade



318.33m²

34sq

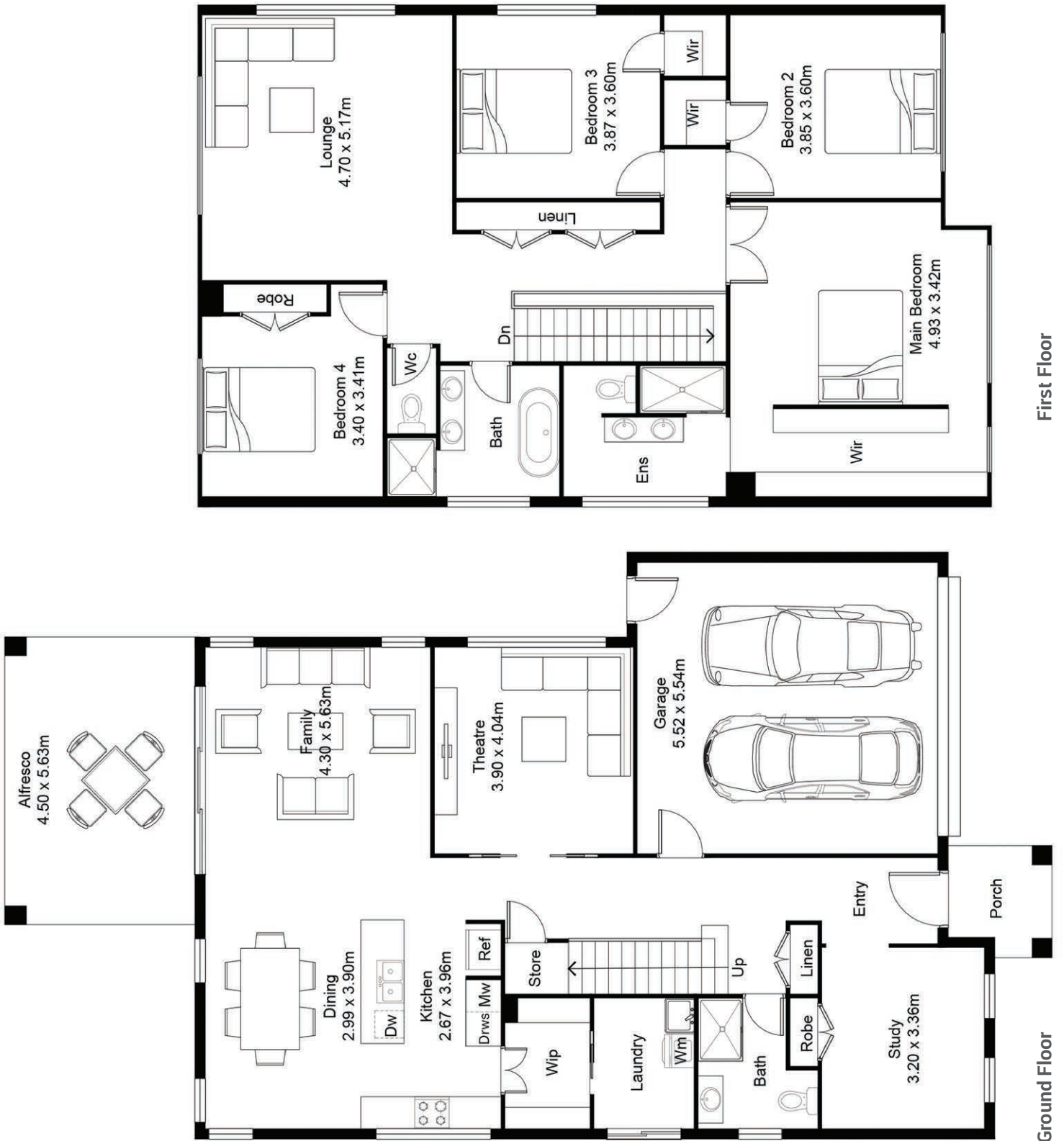
Suits 13.5m frontage

L = 19.95m

W = 11.27m

MAIN HOME	m ²
Ground Floor	119.93
First Floor	141.12
Alfresco	19.70
Garage	33.59
Porch	3.99

Disclaimer: All photographs, facades, colour schemes, floor plans and dimensions are for illustrative purposes only and may vary slightly to the end product.



Disclaimer: All photographs, facades, colour schemes, floor plans and dimensions are for illustrative purposes only and may vary slightly to the end product.