



# The Lachlan



**DOUBLE STOREY | DUAL LIVING | Pictured with the Mode Facade**



5



3.5



2

363.15m<sup>2</sup>

39sq

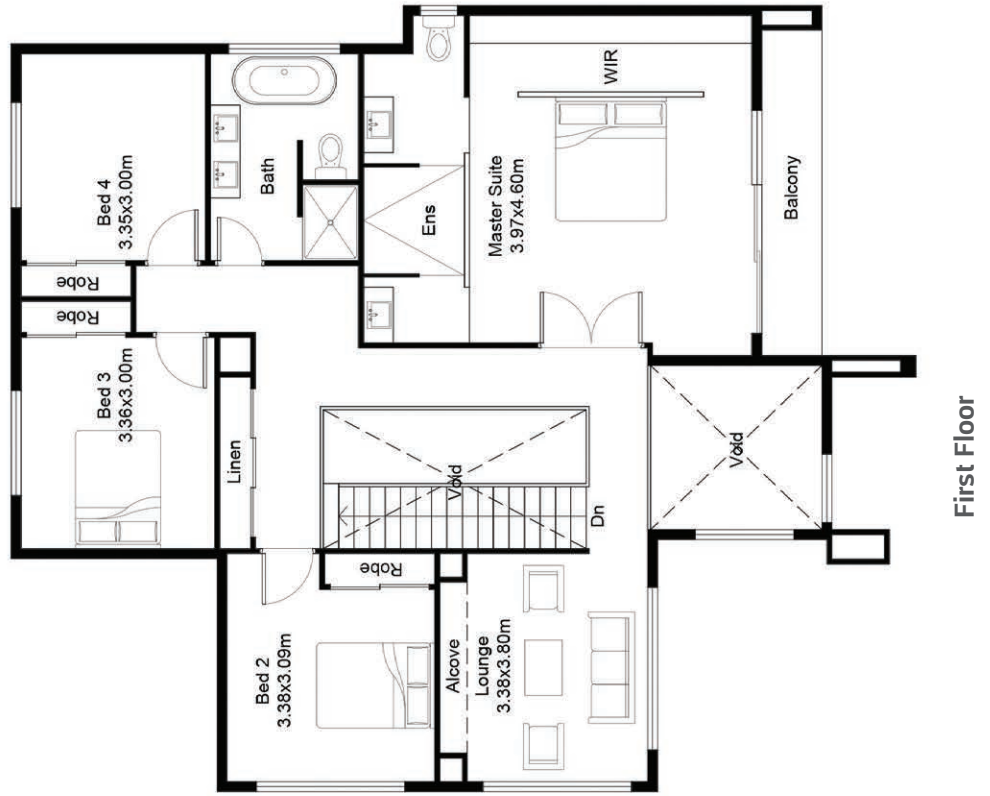
**Suits 17.5m frontage**

**L = 20.15m**

**W = 15.58m**

MAIN HOME		m <sup>2</sup>
Ground floor		117.14
First Floor		127.99
Alfresco		14.01
Garage		36.09
Balcony		5.24
Porch		2.49
SECONDARY DWELLING		
Ground floor		59.14
Porch		1.05

Disclaimer: All photographs, facades, colour schemes, floor plans and dimensions are for illustrative purposes only and may vary slightly to the end product.



Disclaimer: All photographs, facades, colour schemes, floor plans and dimensions are for illustrative purposes only and may vary slightly to the end product.