



## SINGLE STOREY | Pictured with the Contemporary Facade



4

2

1

175.69m<sup>2</sup>

18.5sq

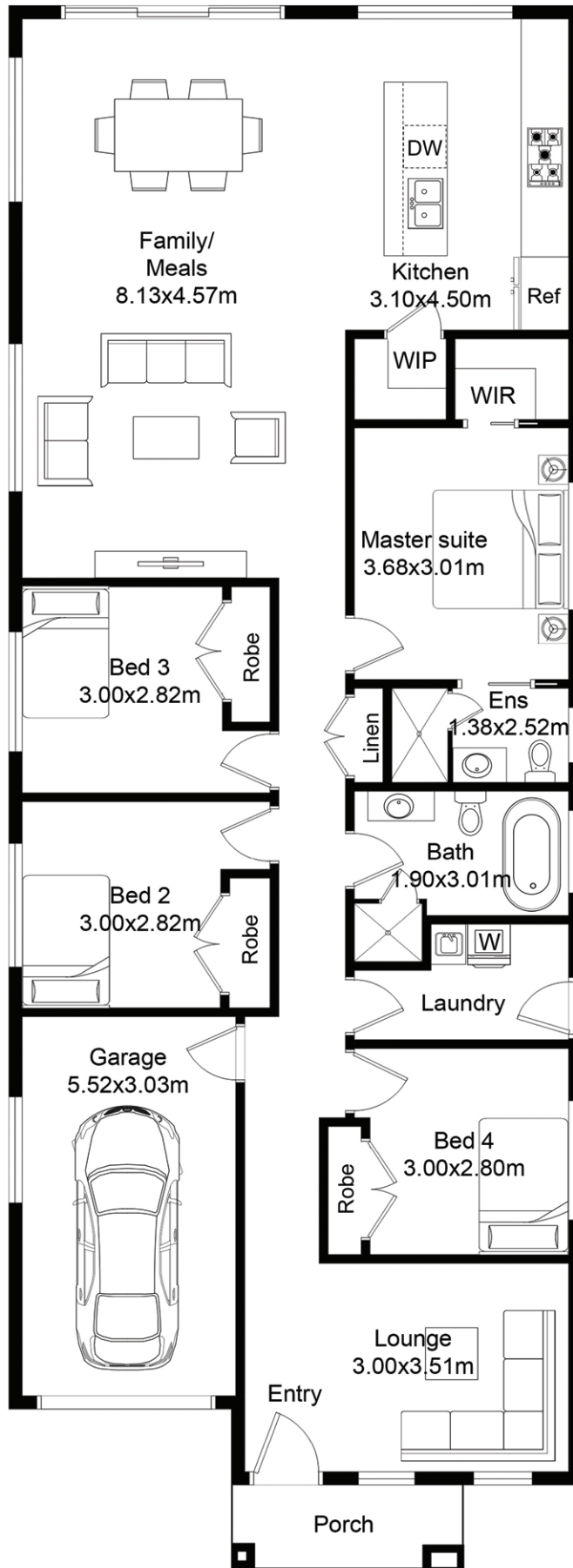
### Suits 10m frontage

L = 21.47m

W = 8.15m

	m <sup>2</sup>
Ground Floor	152.81
Garage	18.80
Porch	4.06

*Disclaimer: All photographs, facades, colour schemes, floor plans and dimensions are for illustrative purposes only and may vary slightly to the end product.*



Disclaimer: All photographs, facades, colour schemes, floor plans and dimensions are for illustrative purposes only and may vary slightly to the end product.